



INSTANT SHELTERS

A STEP BY STEP GUIDE
TO ERECTING THE 4 LEG
CANOPRO LITE SHELTER



SHELTER GUIDE

Things You Should Know

- ↑ Where possible, two people should erect the shelter.
- ↑ Do not fully extend the frame until the canopy is attached. This is because the further the frame is pulled out, the higher the centre post goes, making it difficult to pull the canopy over.
- ↑ We recommend for first time use the moving joints are lubricated with WD40 or a silicone spray.

1

Open and remove frame from box.



2



Standing at opposite sides of the frame, hold a leg in each hand. Carefully lift the frame slightly off the ground whilst moving backwards to extend the frame outwards until the legs are an arms width apart. This will need to be done on each side if erecting the shelter alone.

3

Remove the canopy from the box, unfold it and locate the corners.



4



Carefully pull the canopy over the top of the frame and ensure all corners are placed in position. Screw in corner baubles through the corner hoops of the canopy and into the hole on the top of the legs to secure canopy.

VISIT US AT:

SURFTURF.CO.UK

CALL US ON:

01925 819608

SHELTER GUIDE

5

Take hold of the cross bars and walk the frame out as far as possible. This will need to be done on each side if erecting the shelter alone.



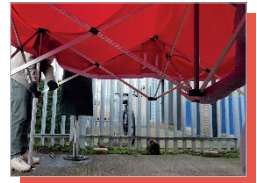
6



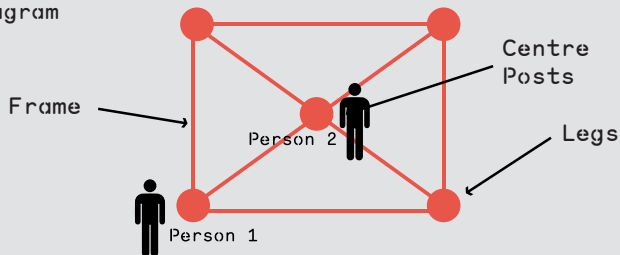
Your frame should now be fully extended outwards.

7

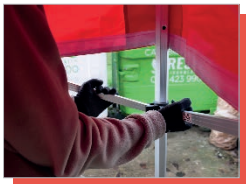
To extend the shelter upwards, person 1 stands at one of the corner legs, with person 2 holding the nearest centre post underneath the shelter.



Step 7/8 Diagram



8



Person 1 at the corner leg needs to push the sliding joint up. At the same time person 2 needs to push the centre post up until it clicks into position. This will extend the framework upwards even further. The pin should locate in to the hole at the top of the leg. Once this clicks in to place repeat with the remaining 3 legs and push the sliding joint into place.

VISIT US AT:

SURFTURF.CO.UK

CALL US ON:

01925 819608

INCREASING HEIGHT

Things You Should Know

⤴ If you are having trouble getting the sliding joint to click in to place, roll the valance up slightly, this will give you a bit more room to push the joint up. Once located just roll the valance back down.

⤴ There are five different height settings on the leg.

⤴ Once the shelter is at its full size, extend the legs upwards to increase the height.

⤴ To do this, you pull the red ring at the bottom of the leg and the inner leg will slide out.

⤴ Pull the inner leg down and it will automatically locate in to the first height setting.



⤴ When lifting the outer leg, put pressure on the footplate so the inner leg extends.

⤴ Once you have completed one side, move over and repeat the process to the opposite side.

VISIT US AT:

SURFTURF.CO.UK

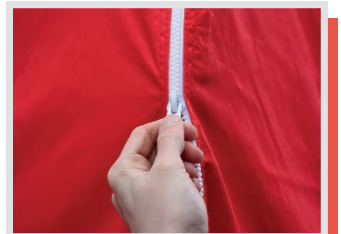
CALL US ON:

01925 819608

ATTACHING SIDES

Firstly, find the side of the sidewall with the long strip of velcro and align it to the long piece of velcro on the inside of the canopy at the bottom of the valance.

Move along the wall attaching the velcro in small increments making sure it is tight.



Once the velcro across the top is attached, wrap the straps around the frame leg.

Zip the next wall to the shelter and continue to attach the velcro.

Things You Should Know

The sidewalls are designed to be a tight fit, this ensures they look neat and professional, if you struggle to join the last side, use the additional joining strip we provide with all sides. We recommend using this for the first few uses of the shelter, until the material stretches slightly.

If more than one piece is required it means that the sidewalls aren't being pulled tight enough.

VISIT US AT:

SURFTURE.CO.UK

CALL US ON:

01925 819608

CANOPRO LITE SPARES

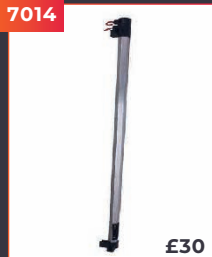
7015



£30

Corner Leg
(Without Inner Leg)

7014



£30

Middle Leg
(Without Inner Leg)

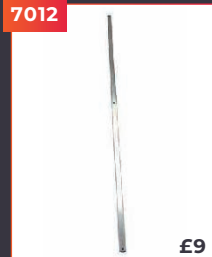
7017



£15

Inner Leg

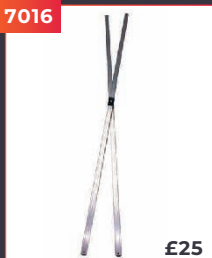
7012



£9

Single Cross Bar

7016



£25

Double Cross Bar
(With Connector)

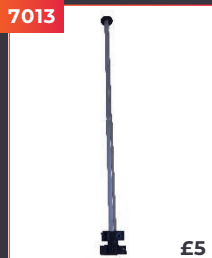
7018



£25

Centre Post
with Plastic Cap

7013



£5

Centre Pole
Complete

7002



£6

Corner Leg
Top Joint

7000



£6

Corner Leg
Sliding Joint

7003



£5

Leg Adjust Joint

7010



£6

Middle Leg
Top Joint

7011



£5.50

Middle Leg
Sliding Joint

7007



£6

Three Way Joint

7040



£2

Pull Pin

7008



£3

Cross Bar Connector
(Includes Nuts & Bolt)

7024



£1

Screw To Attach
Cross Bar To Joint
(Set of 4)

CUSTOMER MUST CONFIRM SHELTER SIZE & GRADE WHEN PURCHASING SPARE PARTS

ALL COSTS ARE INCLUDING VAT, CARRIAGE WILL BE CHARGED ON ALL ORDERS FOR SPARES

CANOPRO LITE SPARES

7019



£20

Lower Centre Pole

10224



£25

Double Cross Bar
(2m x 2m, 3m x 2m & 4m x 2m)

10225



£25

Double Cross Bar
(1.5m x 1.5m)

10226



£25

Double Cross Bar
(5m x 2.5m)

10227



£30

Corner Leg
(2m)

10228



£30

Corner Leg
(1.5m)

10228



£30

Middle Leg
(1.5m)

10229



£30

Corner Leg
(5m x 2.5m)

7025



£1

Screw To Attach Joint To Leg

7044



£2.50

Bauble

7020



£6

Lower Centre Pole Bracket

7021



£6

Lower Centre Pole Bracket

7005



£5

Centre Pole Mushroom

7022



£2

Plastic Bung For Cross Bar Ends

7023



£2

Rubber Washer For Corner Bar Connector

7009



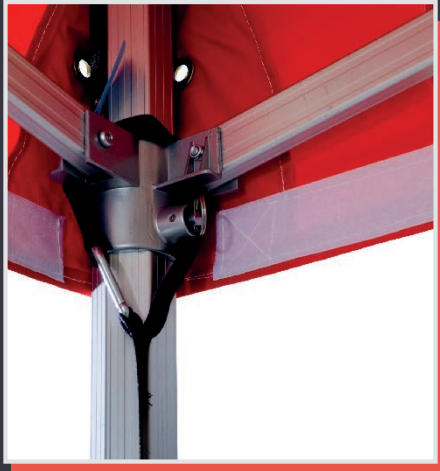
£2

Cross Bar Connector Nut & Bolt

CUSTOMER MUST CONFIRM SHELTER SIZE & GRADE WHEN PURCHASING SPARE PARTS

ALL COSTS ARE INCLUDING VAT, CARRIAGE WILL BE CHARGED ON ALL ORDERS FOR SPARES

ACCESSORIES



Anchor Kit

Comprising of a 360mm long metal stake and a webbing anchor strap. This is designed to safely strap around the frame.

Firstly, clip the strap around the inside top corner joint. Run this down the inside of the corner leg. Place a large metal stake through the loop and pull tight to secure into the ground.

Canopy Protector Bag

Included with all of our instant shelters is a canopy protector cover. This drawstring bag goes over the canopy when the frame is packed down, prior to putting the shelter in the bag. It assists in the protection of your canopy and stops it from getting marked by the frame bag.





INSTANT SHELTERS

Surf & Turf Instant Shelters Ltd

Unit 7 Tatton Court, Kingsland Grange, Warrington, Cheshire WA1 4RR

01925 819608 info@surfturf.co.uk