



# INSTANT SHELTERS

---

## 1.5m Aluminium Counter Instructions





# PACKAGE CONTENTS

These are the parts included in your counter package. Should any parts be missing or damaged please contact us directly.



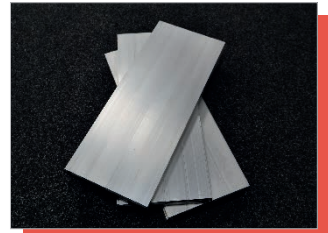
**Counter Frame**

X1



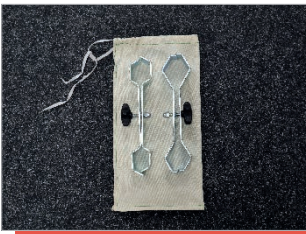
**Aluminium Runners**

X4  
(X2 Male, X2 Female)



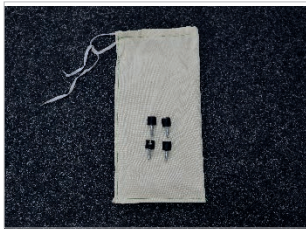
**Aluminium Counter Top**

X3



**Clamps**

X2



**Lugs**

X4

VISIT US AT:

**SURFTURF**.CO.UK

CALL US ON:

**01925 819608**

# 1.5M COUNTER GUIDE

1

Open and remove all items from the box labelled 'counter frame and clamps'.



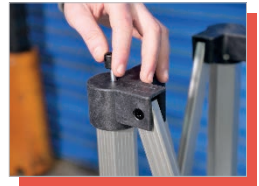
2



With two people standing opposite each other, take hold of the two corner legs on the side and walk backwards until the frame is fully extended, the corner sliding joint automatically clicks into place.

3

Once the frame is fully extended, screw the lugs into each corner of the frame until they are secured tightly.



4



Once everything is secure, connect the aluminium runners together.

5

At the end of the aluminium runners there is a small hole, this slots on to the lugs which are attached to each corner.



# 1.5M COUNTER GUIDE

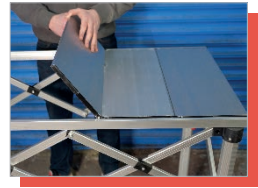
6



Place the aluminium runners along the long side of the frame making sure the ridged side is facing inwards.

7

Apply the aluminium slats by placing them on top of the ridges on the aluminium runners and adjust to your desired height setting.



8



Secure the counter frame to the corner leg on the gazebo using the clamps provided, this adds strength and stability to the counter.

VISIT US AT:

**SURFTURF**.CO.UK

CALL US ON:

**01925 819608**



# INSTANT SHELTERS

Surf & Turf Instant Shelters Ltd

Unit 7 Tatton Court, Kingsland Grange, Warrington, Cheshire WA1 4RR

01925 819608 [info@surfturf.co.uk](mailto:info@surfturf.co.uk)